

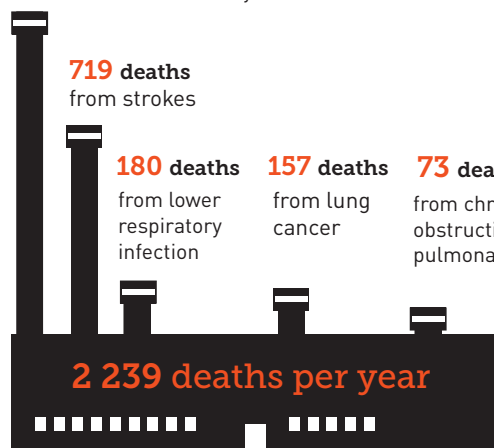


# Eskom's coal-fired power stations make us ill and kill thousands of South Africans every year

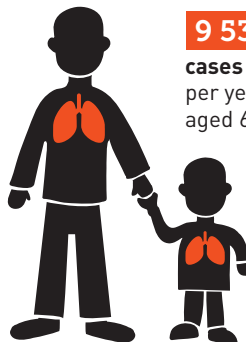
Source: Dr Mike Holland, Health impacts of coal fired power plants in South Africa, 2017

## Air pollution from Eskom's coal-fired power stations cause:

**1110 deaths**  
from ischaemic (coronary) heart disease



**2 781 cases of chronic bronchitis**  
per year in adults

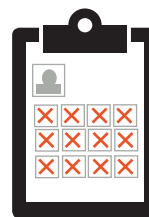


**9 533 cases of bronchitis**  
per year in children aged 6 to 12



**94 680 days of asthma symptoms**  
per year in children aged 5 to 19

**2 379 hospital admissions**  
per year



**996 628 lost working days**  
per year

**3 972 902 days of restricted activity**  
per year



The total costs associated with these impacts exceed

**USD2.3 billion per year**

## Based on the emissions from each Eskom power station, the most lethal Eskom power stations are:

**Medupi:**

- 453 cases of chronic bronchitis,
- 1552 cases of bronchitis in children ages 6-19,
- 15 412 asthma symptom days in children,
- at a cost of more than \$386 million per year

**364 deaths per year**

**Matimba:**

**262 deaths per year**

**Kendal:**

**210 deaths per year**

**Lethabo:**

**204 deaths per year**

**Matla:**

**192 deaths per year**

**Tutuka:**

**192 deaths per year**

These numbers exclude significant impacts of air pollution from mining (such as the effects of coal dust on workers and the public), the transportation of coal, and water contamination.

# Annual health impacts of emissions from Eskom's coal-fired power stations

## Annual health impacts linked to coal-fired generation in South Africa

	Cases, etc.	Value, \$int, millions
<b>Equivalent attributable deaths:</b>		
• Lung cancer	157	
• Ischaemic heart disease	1,110	
• Chronic obstructive pulmonary disease	73	
• Stroke	719	
• Lower respiratory infections	180	
<b>Total equivalent attributable deaths</b>	<b>2,239</b>	<b>2,121.94</b>
Chronic bronchitis (adults, cases)	2,781	64.64
Bronchitis (children 6 to 12)	9,533	2.19
Equivalent hospital admissions (all ages)	2,379	2.79
Restricted activity days (all ages)	3,972,902	132.72
Asthma symptom days (children 5 to 19)	94,680	1.44
Lost working days (adults)	996,628	47.05
<b>Total Costs</b>		<b>2,372.78</b>

## Health impacts and associated costs (\$int, millions) allocated to individual Eskom power stations

	Total equivalent annual deaths	Chronic bronchitis (adult, cases)	Bronchitis (children 6 to 12 years)	Equivalent hospital admissions (all ages)	Restricted activity days (all ages)	Asthma symptom days (children 5 to 19 years)	Lost working days (adults)	Total costs, \$int, millions
<b>Arnot</b>	79	98	335	84	139,569	3,326	35,012	83.36
<b>Camden</b>	84	104	357	89	148,980	3,550	37,373	88.98
<b>Duvha U 1-3</b>	143	178	609	152	253,845	6,050	63,679	151.61
<b>Grootvlei</b>	58	72	247	62	103,011	2,455	25,841	61.52
<b>Hendrina</b>	105	130	445	111	185,467	4,420	46,525	110.77
<b>Kendal</b>	210	261	894	223	372,400	8,875	93,419	222.41
<b>Kriel</b>	141	176	602	150	250,866	5,979	62,931	149.83
<b>Komati</b>	28	35	120	30	50,188	1,196	12,590	29.97
<b>Lethabo</b>	204	253	868	217	361,646	8,619	90,721	215.99
<b>Majuba</b>	177	219	752	188	313,579	7,473	78,663	187.28
<b>Matimba</b>	262	326	1,117	279	465,404	11,091	116,749	277.96
<b>Matla</b>	192	238	817	204	340,278	8,109	85,361	203.23
<b>Medupi</b>	364	453	1,552	387	646,706	15,412	162,230	386.24
<b>Tutuka</b>	192	239	818	204	340,963	8,126	85,533	203.64
<b>Totals</b>	<b>2,239</b>	<b>2,781</b>	<b>9,533</b>	<b>2,379</b>	<b>3,972,902</b>	<b>94,680</b>	<b>996,628</b>	<b>2,373</b>

